

TransLED™

Transparent Scrolling Message Center

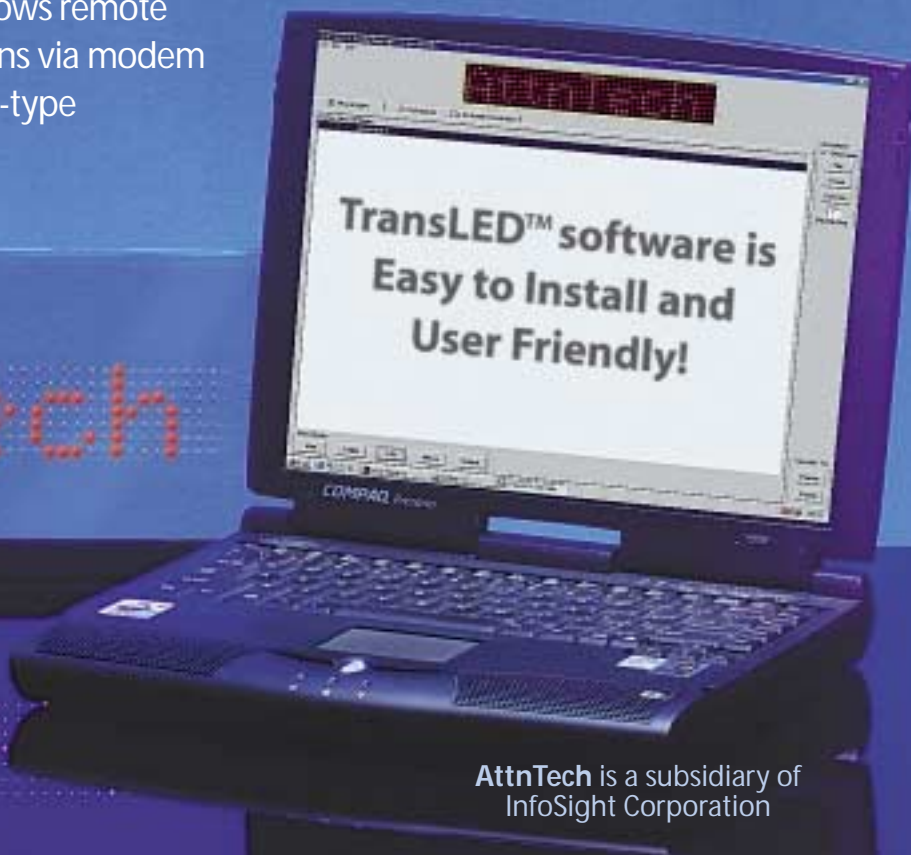
Intensify your visual impact with light and motion!

- ✦ *Promote products and special sales*
- ✦ *Reinforce promotional messages without blocking the customer's view of your product*
- ✦ *Change messages easily with a wireless remote Palm-type device*
- ✦ *Internal clock and calendar schedule messages automatically*

The TransLED™ displays virtually unlimited characters, graphics and animation. All hardware and software is completely self-contained in the sign. **AttnTech** technology allows remote message editing of networked signs via modem and individual editing with a Palm-type hand-held device.

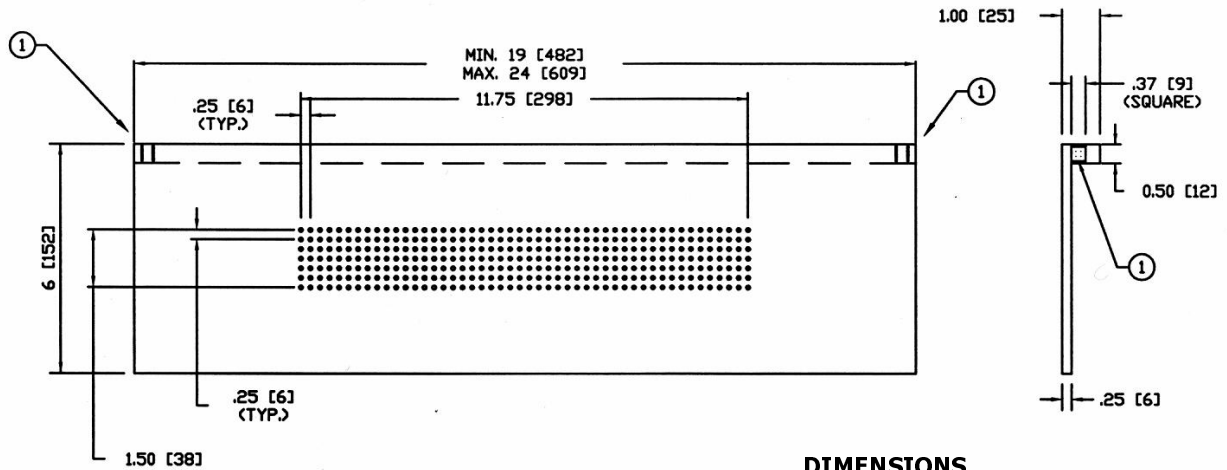


Mounts on glass cooler and freezer doors.



AttnTech is a subsidiary of
InfoSight Corporation

For more information please visit our website www.attntech.com or call 1-888-642-3600



① MOLEX
4-CONDUCTOR PLUG FOR
POWER & COMMUNICATIONS

NOTE: ONLY 1 PLUG ON 19" MODELS
2 PLUGS USED ON 20" &
LARGER MODELS

DIMENSIONS

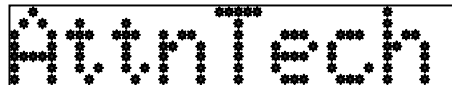
WIDTH: 19" min to 24" max
HEIGHT: 6"
DEPTH: 1" overall, 1/4" glass
WEIGHT: 3.1 pounds (23.5" model)

EXTERNAL CONNECTIONS

- Dual 4-prong MOLEX-style plugs (single plug on models less than 20" width), contain both power and serial communications
- 15V DC supplied by external 120/240V power supply, UL approved
- Signs may be connected from either plug
- Multiple signs may be daisy-chained from one external power/communications connection

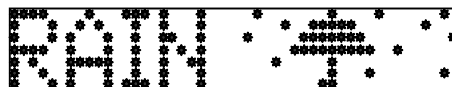
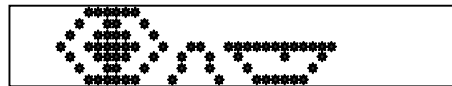
MESSAGE DISPLAY AREA

- 7 rows x 48 columns
- .25" nominal pixel spacing, horizontal & vertical
- minimum of eight (8) 5x7 characters, full upper and lower case
- automatic proportional spacing typically yields additional characters



ANIMATION & GRAPHICS

- Scroll left, right, up & down
- Marquee
- Instant appear & disappear
- Fade-in & fade-out
- Spin
- Come & Go
- Full individual pixel control for custom graphics



COMMUNICATIONS & PROGRAMMING

- 19200 baud serial with integral IRDA link
- Each sign is independently addressable (for networking via remote modem link)
- Custom embedded controller with 64K EEPROM
- Internal clock/calendar with 2-week power-loss backup
- Windows-based PC programming utility with on-screen emulation
- Optional Palm™-type interface for message downloading (limited editing capability)